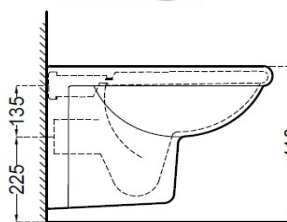
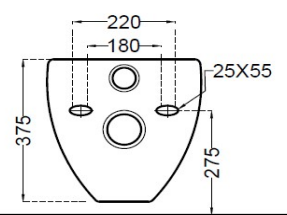


TOP VIEW



SIDE VIEW



BACK VIEW

GENERAL INFORMATION

Product Code	CMS-WHT-103951NSPP
Brand	Essco
Colour	White
Type	Wall Hung WC
Material	Ceramic-Vitreous China (VC)

PRODUCT SPECIFICATION

Product Dimension	365x545x375 mm
Bowl Opening (Inner Dimension)	265x345 mm
Product Net Weight	17.0 Kg
Product Gross Weight	20.8 Kg
Packaging Dimension	450X390X555 mm
Outlet	Horizontal
Inlet Hole And Outlet Hole Dimension	Internal diameter of inlet hole dia. Ø 55 ± 3 mm External diameter of outlet hole dia. Ø 100 ± 5 mm

PRODUCT FEATURES

Product Features	Round Design WC, PP Soft Close Seat Cover, Water Usage - 3/6 LPF With Dual Flushing, Anti Bacterial Glaze on Ceramic, Smooth Glaze Surface and Complete Trap Wash, Product With Complete Genuine Fixing Accessories
------------------	---

ACCESSORIES INCLUDED

Seat cover	CMS-WHT-101S
Inlet Outlet Gasket	ZPS-WHT-GK01

ACCESSORIES RECOMMENDATION

Rag bolt	ZPS-SNS-RB07
Concealed cistern	JCS-WHT-2400S, 2400P, 2400, 2400WS, 2400WP, 2400FS, 2400FP, 2431P, 2431FP, 2431, 2431S, 2431FS

CARE AND CLEANING GUIDELINES

- Vitreous china sanitary ware products are fragile in nature and need to be handled with care (to avoid personal injury) at all times during its storage, handling, installation and use thereafter.
- The product is heavy and it is recommended that two persons hold it while it is being fixed.
- Carefully inspect the new product for damage before installation. Recommended to inspect the sanitaryware with wooden Hammer.
- Risk of product damage. Over tightening may cause breakage or chipping of vitreous china. Recommended to use hard rubber & nylon spacer in between ceramic & metal fixtures.
- Risk of external leakage. Do not lift or rock the bowl after placement.
- Always test your cleaning solution on an inconspicuous area on the product before applying it to the entire surface.
- Do not allow cleaners to sit or soak on the product.
- Use a soft, dampened sponge or cloth to clean. Never use abrasive material like a bristle brush or scouring pad.
- Wipe surfaces clean and rinse completely with water immediately after applying cleaners.
- Clean Chrome, stainless steel surfaces once a week. Do not use cleaners containing chloride on chrome, stainless steel. If used, rinse the surface immediately to prevent corrosion.
- Wherever chrome plating is used on the products, use only warm water to clean and then dry with a soft cloth.
- Recommended to use Genuine Accessories.

QUALITY MANAGEMENT SYSTEM - ISO 9001



DISCLAIMER: Our every effort has been made to ensure factual accuracy, the information presented subject to changes due to requirements in different sites, markets and/ or countries. All dimensions are in mm (Tolerance ± 5 MM). Jaquar reserves the right to make the necessary amendments at any time without prior notice.
For Installation Refer Actual Product.Last modified on 02 Sepetemer 2025.